

gru - crane - kran - grue - grúa



Dimensioni Generali - General Dimensions - Dimensions Générales
Gesamtabmessungen - Dimensiones Generales

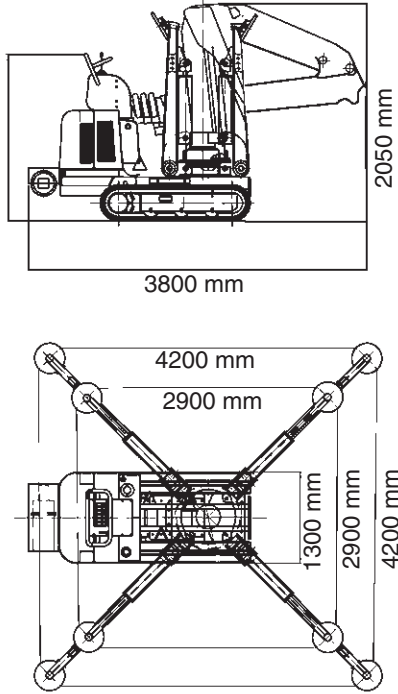


Tabella portata (stabilizzatori tutti estesi)
Lifting Capacity Chart (outriggers fully extended)
Tableau de Charge (stabilisateurs étendus max.)
Hublasttabelle (Abstützung ganz ausgefahren)
Tablero de Carga (estabilizadores a la máx extensión)

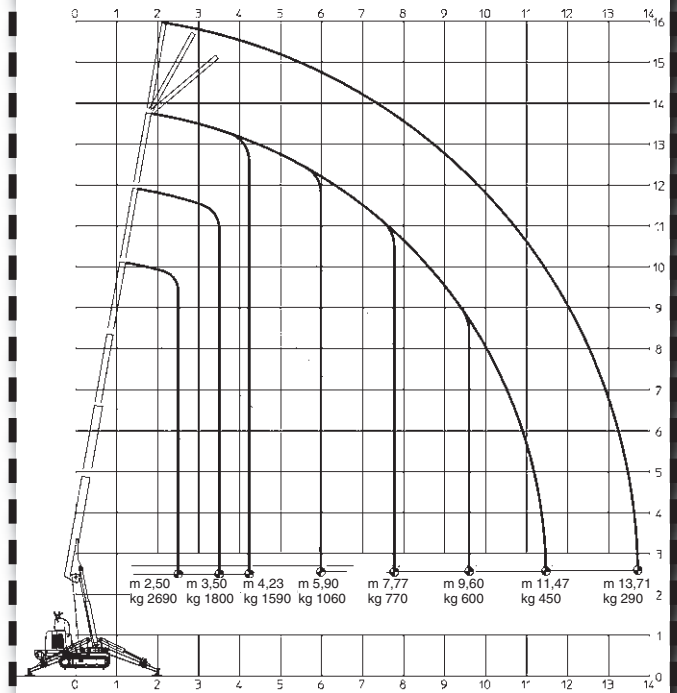
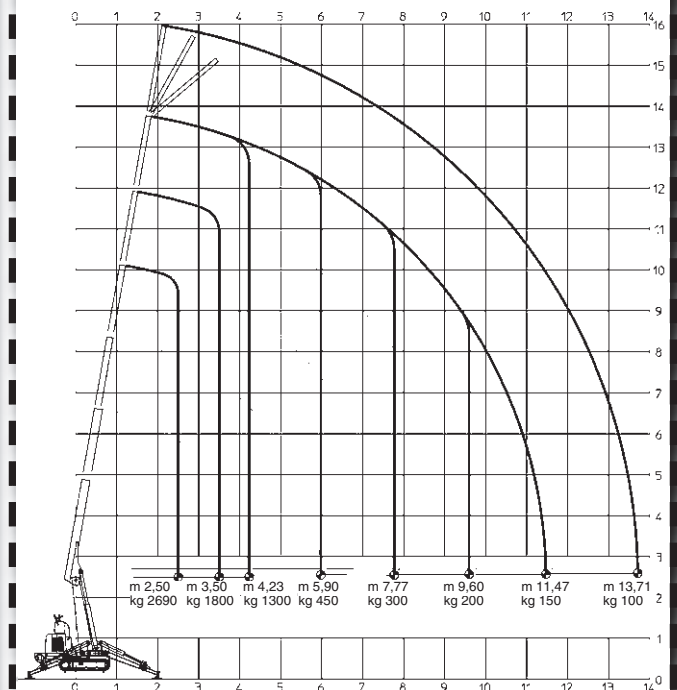
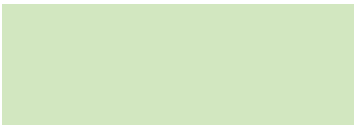


Tabella portata (stabilizzatori min. estesi)
Lifting Capacity Chart (outriggers min. extended)
Tableau de Charge (stabilisateurs étendus min.)
Hublasttabelle (Abstützung min. ausgefahren)
Tablero de Carga (estabilizadores a la min. extensión)





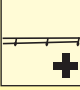
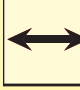




DATI TECNICI – TECHNICALS SHEETS – TECHNISCHE DATEN – CARACTERISTIQUES TECHNIQUES – DATOS TECNICOS



Motore diesel avviamento elettr.	Motor diesel electric starting	Dieselmotor Elektrostarter	Moteur diesel démarrage électr.	Motor diesel arranque electr.	Yanmar3TNE74 24HPa 3600g/1° 3 cylinders cooled to water
Capacità serbatoio	Tank capacity	Tankkapazität	Capacité réservoir	Capacidad tanque	23 l.
Trazione idrostatica a 2 velocità	Drive system hydrostatics to 2 speeds	Hydrostatischer Antrieb mit 2 Geschwindigkeiten	Transmission hydrostatique à deux vitesses	Tracción hidrostática a 2 velocidades	Km/h 2,6 – 4,7
Angolo di rampa	Ramp angle	Steigungswinkel	Rampe admissible	Rincòn de tramo	30°
Cingoli in gomma	Tracks in rubber	Raupenketten aus Gummi	Chenilles en caoutchouc	Orugas de goma	1850 x 250 x 20 mm.
Portata max	Max lifting	Max.Tragfähigkeit	Capacité maximum	Carga máxima	2690 Kg.
Sbraccio massimo	Max working radius	Max.Ausladung	Longueur de flèche max	Alcance lateral máx.	13,71 m.
Altezza massima	Max.working height	Tragfähigkeit bei max.Ausladung	Hauteur de levage max.	Altura max. de trabajo	16 m.
Fune	Winch rope	Seil	Câble	Cable	55 m. ø 8 mm.
Rotazione	Rotation	Umdrehung	Rotation	Rotación	360°
Stabilizzatori	Outriggers	Abstützung	Stabilisateurs	Estabilizadores	Hydraulic multi position
Pressione al suolo	Max track loading	Bodendruck	Pression au sol	Presión de apoyo	0,40 Kg/cm²
Comandi elettrico proporzionali	Electricals proportionals control	Elektrische proportionale Steuerung	Commandes électriques proportionnelles	Mandos eléctricos proporcionales	
Limitatore di momento	Automatic limiting device	Automatische Grenzlastregelung	Limiteur de charge	Limitador de momento	Elettronico – Electronic – Elektro-nisch - Électronique - Electrónico
Pressione max	Max pressure	Max Betriebsdruck	Pression max	Max presión	230 bar
Dimensioni Gru	Dimensions crane	Abmessungen Kran	Dimensions de la grue	Dimensiones grúa	3800 x 1300 x 2050 mm.
Peso	Weight	Gewicht	Poids	Peso	3700 Kg.

OPTIONALS

 <p>Verricello Winch Treuil Seilwinde Cabrestante</p>	 <p>Elettropompa 380 V Electric pump 380 V Pompe électrique 380 V Elektrische pumpe 380 V Bomba eléctrica 380 V</p>	 <p>Radiocomando Radio remote control Radiocommande Funkfernsteuerung Radiocomando</p>	 <p>Treatmento marino delle gru Marine treatment of the crane Traitement marin de la grue Maritime ausstattung des kranes Tratamiento especial marino de la grúa</p>
 <p>Prolunghe meccaniche Manuals extensions Rallonges manuelles Manuelle verlängerung Alargadores mecánicos</p>	 <p>Allargamento idraulico cingoli Widening hydraulic tracks Élargissement hydraulique des chenilles Hydraulisch ausfahrbare raupenketten Eсанche hidráulicas orugas</p>	 <p>Telecomando Cable remote control Télécommande Kabelfernsteuerung Control remoto para cable</p>	 <p>Cestello Basket Nacelle Personenkorb Cesta</p>



Kegiom Lifting s.n.c. - Via Duchessa di Galliera, 12
15076 Ovada (AL) - Italy
Tel./Fax (+39) 0143 822031 - 46541
e-mail: info@kegiom.com - web: www.kegiom.com
C.F. e P. Iva 01956070062 - C.C.I.A.A. Alessandria n. 213887



Kegiom si riserva il diritto di apportare qualsiasi modifica senza preavviso nè responsabilità.
Kegiom reserves the right to make changes without prior notice or responsibility.